



2019 Bayfield Race Week

Wayzata Yacht Club - Apostle Islands Station
July 1 - 5, 2019
Bayfield, Wisconsin USA

Sailing Instructions

The notation [DP] in a rule in the Sailing Instructions (SI) means that the penalty for a breach of that rule may, at the discretion of the protest committee (PC), be less than disqualification.

The notation [NP] in a rule in the SI means that breaches in this rule will not be grounds for a protest by a boat. This changes Racing Rules of Sailing (RRS) 60.1 (a).

Code of Conduct. The registered competitor shall be responsible for conduct of the entire crew before, during, and after the Race while at Race related locations for Race related events. See RRS 2 and 69.

1. Rules

- 1.1 The regatta will be governed by the rules as defined in the *Racing Rules of Sailing*.
- 1.2 Each boat shall also comply with all U.S. Coast Guard (USCG) and other applicable governmental laws, rules or regulations. [DP]
- 1.3 The following Racing rules will be changed as follows.
 - 1.3.1 SI 4.2 changes RRS Race Signal AP
 - 1.3.2 SI 9.1.4 changes RRS 18 and 28, and adds the definition of a waypoint
 - 1.3.3 SI 10.4.1 changes RRS 29.1
 - 1.3.4 SI 10.4.2 changes RRS 29.2
 - 1.3.5 SI 10.7 changes RRS A4 and A5
 - 1.3.6 SI 12.1 changes RRS 44.1
 - 1.3.7 SI 13.1.3 changes RRS 35, A4 and A5
 - 1.3.8 SI 13.2.1.1 changes RRS 35, A4 and A5
 - 1.3.9 SI 13.2.1.2 changes RRS 35, A4 and A5
 - 1.3.10 SI 13.4 changes RRS 35, A4 and A5
 - 1.3.11 SI 14.2 changes RRS 62.2 and modifies RRS 61.2 and 61.3
 - 1.3.12 SI 14.5 changes RRS 62
 - 1.3.13 SI 14.7 changes rules 60.1, 60.2 and 60.4.
 - 1.3.14 SI 15.2 changes RRS 35, A4 and A5
 - 1.3.15 SI 15.3 changes RRS A2.1



2. Notice to Competitors

2.1 Official notices to competitors will be posted on the Official Notice Board located at Bayfield Pavilion on Rittenhouse Avenue at the entrance doors on the south side of the building and the relevant Yachtscoring.com event page.

3. Changes to the Sailing Instructions

3.1 Changes to the SIs will be posted on the Official Notice Board and the relevant Yachtscoring.com event page by 0900 hrs, changes to the SIs will also be announced approximately two hours prior to the warning signal for the first race of the day by the Race Committee (RC) on the official VHF radio channel (VHF), SI 17. Any change to the schedule of races will be posted by 2000 hrs on the day before it will take effect except:

3.1.1 Change of races scheduled by adding additional races for any fleets will be announced via VHF on that day.

3.2 In accordance with RRS 90.2 the RC may alter these SIs by hailing the fleets and making the change on VHF.

4. Signals Made Ashore

4.1 Signals made ashore will be displayed on the RC Signal Boat at dock at the Blackhawk Boat Yard (located at East Dock Road, Bayfield, WI).

4.2 When flag AP is displayed ashore, ‘1 minute’ is replaced with ‘not less than 1 hour’ in the Race Signal AP. This changes RRS Race Signal AP.

5. Schedule of Races

5.1 Registration for all fleets will be Sunday June 30, 2019 from 1600 – 1800 hrs at the Pavilion.

5.2 Competitors’ meeting for all fleets will be held Monday July 1, 2019 at 0800 hrs at the Pavilion. Attendance by a representative of each boat is mandatory.

5.3 Dates of racing

Fleet	Race Dates	Number of Races per day
Buoy, Sport Boats, Small Boats, Multihull	July 1 – 5, 2019	Up to 3 races
Mid-distance (MD) and Jib and Main (JAM)	July 1 – 5, 2019	Up to 2 races

5.4 The scheduled time of the first warning signal for the first race each day will be 1100 hrs. Postponement on shore may be announced via VHF at 0900 hrs. each day.

5.5 The five planned days of racing are intended to include:

5.5.1 The WYC/AIS Memorial Cup is intended to be a 1-day pursuit start race for all fleets. This race honors the memory of those who have passed away who



have made significant contributions to Bayfield Race Week. This shall be a pursuit race, with each yacht's start time provided at the competitors' meeting or during the social the night before the event and on the relevant Yachtscore.com event page.

5.5.2 There is intended to be a 1-day Mid-Distance race for all fleets. This race will serve to bring all competitors together on one common course, the exact length of which may be adjusted for some fleets.

5.5.3 There is intended to be three days of racing within the established fleet designations.

5.6 On the last scheduled day of racing no warning signal will be made after 1430 hrs.

5.7 Flag A displayed, with no sound, while boats are finishing means, 'No more racing today'.

6. Class Flags

6.1 Classes will be defined and posted on the Official Notice Board prior to the mandatory competitors' meeting.

6.2 Class flags for boats will be provided during registration and/or at the mandatory competitors' meeting.

6.2.1 Class flags shall be flown from the backstay. Any boats without a backstay shall affix the class flag to the end of their boom. [DP]

7. Racing Areas

7.1 Racing may be held anywhere in, near or around the Apostle Islands. Appendix A shows the partial area in which racing may be held.

8. The Courses

8.1 Buoy, Multi-Hull, Sport Boat, and Small Boat Fleets - Course diagrams are included in Appendix B.

8.1.1 Courses shall be Windward/Leeward with 2, 4, or 6 legs.

8.1.2 Windward mark is to be rounded to port.

8.1.3 A leeward mark (one mark) or leeward gate (two marks) may be used. The location of the leeward mark or gate will be approximately 0.2 nm to windward of the starting line. If one of the leeward gate marks is missing, boats shall round the existing leeward mark to port.

8.1.4 A windward offset mark may be laid. Windward offset marks will be located to port of the windward mark, approximately perpendicular to the course axis. The windward offset mark is rounded to port. If no offset mark is in place, the windward mark shall be rounded to port.



8.1.5 Marks for the Buoy Courses shall be designated as follows:

Mark	Description	Mark	Description
S	Start	L	Leeward
W	Windward	F	Finish
G	Gate	O	Offset

- 8.2** MD and JAM Fleets - Appendix A shows the approximate location of the marks that might be used to define the course for the MD and JAM fleets.
- 8.3** Buoy, Multi-Hull, Sport Boat, and Small Boat Fleets, at the discretion of the RC, may sail a windward leeward course as described in SI 8.1 or a mid-distance course as described in SI 8.2.
- 8.4** Courses will be posted on a display board on the RC Signal boat. They will show the course, the order in which the marks are to be passed, and the side on which each mark is to be passed. The RC will also announce the course on VHF.
- 8.5** The approximate compass bearing and distance from the starting line to Windward Mark will be displayed from RC Signal Boat.
- 8.6** Memorial Cup: course may use any combination of marks to provide a course of the desired distance.
- 8.7** The one-day mid-distance race for all fleets may use any combination of marks to provide a course of the desired distance.

9. Marks

- 9.1** Marks may be:
 - 9.1.1** Temporary buoys (which may be red, orange, white, yellow, or green and be in the form of cylinders, spheres or tetrahedrons),
 - 9.1.2** Islands,
 - 9.1.3** Government navigation marks/buoys, and/or
 - 9.1.4** Waypoints as defined by latitude and longitude coordinates, that the course requires a boat to leave on a specified side. Any use of a waypoint shall be in accordance with World Sailing Appendix WP. Appendix WP can be found at www.wyc.org/ais and the relevant Yachtscoring.com event page. This appendix changes RRS 18 and RRS 28 and adds a definition of a waypoint.
- 9.2** All boats shall obey all government navigation marks/buoys while racing, except if the navigation mark/buoy is a mark of the course, when such navigation mark/buoy shall be rounded pursuant to RC instructions.

10. The Start

- 10.1** The start order will be announced at the competitors' meeting.
- 10.2** Races will be started using RRS 26. The warning signal of each succeeding class may be made with the start signal of the preceding class.
- 10.3** The starting line will be between a staff displaying an orange flag on an RC Signal Boat and course side of the starting mark.



- 10.4** Recalls will be signaled as follows:
 - 10.4.1** When signaling an individual recall, RC shall announce via VHF radio the sail number(s) of boat(s) identified as being OCS. This changes RRS 29.1.
 - 10.4.2** When signaling a General Recall, the recalled class shall go to the end of the starting order. This changes RRS 29.2.
- 10.5** Memorial Cup
 - 10.5.1** The WYC/AIS Memorial Cup will follow a pursuit format where all boats will be classified by their LMPHRF number with the slowest boats starting first and the fastest boats starting last.
 - 10.5.2** Each yacht's start time will be provided at the skippers meeting or during the social the night before the event and on the relevant Yachtscoring.com event page.
 - 10.5.3** Starting area, course and finish line location to be announced at 0900 hrs via VHF on the day of the race.
 - 10.5.4** Competitors are reminded of their Rule 24.1 obligations. Specifically, unless a boat is within four minutes of her start time, she is to stay clear of the starting area. If she is within four minutes of her start time she is racing. [DP]
 - 10.5.5** WYC/AIS Memorial Cup starts may be made with RRS 30.1. The I Flag may be displayed as a preparatory signal from four minutes before the first start and taken down one minute before the last start.
- 10.6** Any boat using a sail with an alternate sail number shall report the proper sail number in writing to the RC, no later than 2 hours prior to the warning signal for the first race of the day, or by VHF hail to the RC no later than 30-minutes prior to the warning signal for the first race of the day. [DP]
- 10.7** A boat that does not start within 20 minutes after her starting signal will be scored 'Did Not Start' (DNS) without a hearing. This changes RRS A4 and A5.

11. The Finish

- 11.1** Buoy, Sport, and Small Boat Fleets:
 - 11.1.1** The Finish will be between a staff displaying an orange flag on a RC Signal Boat and the course side of the mark nearest to the RC Signal Boat, unless an alternative location is announced with the course description.
- 11.2** MD/JAM Fleet:
 - 11.2.1** The finish will be between the Orange Flag located at the Bayfield Fishing Dock and the course side of a buoy approximately 200 yards from the pier, unless an alternative location is announced with the course description.
- 11.3** Multi-Hull class:
 - 11.3.1** SI 11.1 shall apply when sailing a buoy course as described in SI 8.1.
 - 11.3.2** SI 11.2 shall apply when sailing a MD course as described in SI 8.2.
- 11.4** Memorial Cup will be finished at the Fishing Dock between the Orange Flag located at the Bayfield Fishing Dock and the course side of a buoy approximately 200 yards from the pier, unless an alternative location is announced with the course description



11.5 At the discretion of the RC, a race may be finished at a waypoint. A waypoint is defined by latitude and longitude coordinate. When finishing at a waypoint, the finish line is a line through the waypoint at a 90-degree angle to the last leg and of the shortest practical length.

11.5.1 Boats shall log their GPS finish time.

11.5.2 In addition, boats shall log the sail number of the boat ahead and behind their finish position, if reasonably possible. [NP]

12. Penalty System

12.1 RRS Appendix V1 applies and is in effect. This changes RRS 44.1.

12.2 RRS Appendix T applies – Arbitration will be in effect for this event.

13. Time Limits

13.1 Buoy Fleet:

13.1.1 The time limit for the first boat of a class to finish each buoy race shall be 3 hours from their start signal.

13.1.2 If the Buoy Fleet is racing a mid-distance course, the time limit shall be 4 hours.

13.1.3 Any boat within the class not finishing a race within 1 hour after the first boat of the class finishes will be scored Time Limit Expired (TLE). This changes RRS 35, A4 and A5.

13.2 MD/JAM Fleets:

13.2.1 For all MD/JAM classes the time limit for the first boat to finish shall be 4 hours from their start signal.

13.2.1.1 Any MD boat not finishing a race within 90-minutes after the first boat in their MD class finishes will be scored TLE. This changes RRS 35, A4 and A5.

13.2.1.2 Any JAM boat not finishing a race within 120-minutes after the first boat in the JAM class finishes will be scored TLE. This changes RRS 35, A4 and A5.

13.3 Multi-Hull, Sport Boat, and Small Boat Fleets:

13.3.1 SI 13.1 shall apply when sailing a buoy course.

13.3.2 SI 13.2 shall apply when sailing a mid-distance course.

13.4 Memorial Cup: Any boat not finishing within 90-minutes after the first boat to finish shall be scored TLE. This changes RRS 35, A4 and A5.

14. Protests and Request for Redress

14.1 Protest forms will be available at the Official Notice Board located on the patio on the east end of the Pavilion, or from a member of the RC, or Yachtscoring.com.

14.2 Protests and requests for redress shall be delivered to a member of the RC or Chief Judge within the protest time limit. For the requirements stated in RRS 61.3, a *protest* or request for redress by a boat may be met by electronically submitting their protest to the protest committee within the time limit stated in the sailing instructions. Information required by RRS 61.2 may be delivered using electronic



mail delivery to WYCAISPROTEST@gmail.com. Instructions on how to file a protest form may be found on the relevant event page on YachtScoring.com. The party submitting a protest electronically should travel to the regatta venue as quickly as possible to participate in an arbitration meeting or protest hearing. This changes RRS 62.2.

14.3 Protest Time Limits

14.3.1 The protest time limit for all fleets shall be 90 minutes after the last boat in their respective fleet has finished the last race of the day, or the RC signals no more racing today, whichever is later.

14.3.2 The protest time limit for the Memorial Cup will be 90 minutes after the last boat has finished the race.

14.4 Notices will be posted on the Official Notice Board as soon as reasonably possible after receiving the protest/request for redress to inform competitors of hearings in which they are parties or named as witnesses. Where reasonably possible, hearings will be scheduled for the day the protests were received and in the order the protests were received. In unusual circumstances and with sufficient notice, the Protest Committee may schedule a hearing for a different day, time or order.

14.5 Failure to hear radio communication required by the RC by items SI 3, SI 8.4, and SI 10.5.3, shall not be grounds for redress. This changes RRS 62.

14.6 Boats may rely upon information in the form of a hail(s) transmitted on VHF radio by the RC where the competitors are at a position on the race course that does not reasonably allow them to observe the flag(s) or hear appropriate sound signals to communicate an action by the RC.

14.7 J/70 Class Rule 3.1(a) is not subject to a protest or request for redress by a boat, the RC or the Technical Committee. This changes rules 60.1, 60.2 and 60.4. [NP] [DP]

15. Scoring

15.1 A boat's corrected time will be determined using the PHRF Time on Distance calculation.

15.1.1 Course length for handicapping purposes will be determined using:

15.1.1.1 Recorded mark coordinates as determined by the PRO

15.1.1.2 Fixed mark coordinates as published in the current USCG Light List – Volume VII.

15.2 A boat that does not finish within the specified time period (SI 13) shall be scored points for the finishing place one more than the number of boats that finished in the time period. These boats will be assigned the scoring abbreviation of TLE – Time Limit Expired. This changes RRS 35, A4 and A5.

15.3 A boats series score will be the total of her races. There are no throw-outs. This changes RRS A2.1.

15.4 The score of each boat's Memorial Cup finishing position, within its respective class, will also be included within their respective class for overall scoring of Bayfield Race Week.

15.5 One race is required to be completed to constitute a Regatta.



16. Safety Regulations

16.1 Each boat shall comply with the following: [NP] [DP]

16.1.1 Each boat shall comply with all USCG and other applicable governmental laws, rules and regulations.

16.1.2 A boat that retires from a race shall notify the RC as soon as possible. RC will monitor VHF.

16.1.3 All boats shall have a working motor appropriate for the size of the boat.

16.1.4 Each boat shall have a functioning VHF marine-grade radio while racing.

16.1.5 Each boat shall have a functioning GPS receiver capable of displaying a boat's latitude and longitude position while racing.

16.1.6 Personal Flotation Devices

16.1.6.1 At the Start and Finish of each race, each person on board each boat is required to wear a USCG or ISO approved personal flotation device (PFD). The use of an ISO approved PFD does not negate the USCG requirement that each vessel shall have at least one (1) USCG approved Type III or V life jacket for each person on board. Belt pack style PFD's are not allowed.

16.1.6.2 For any boat with only two (2) individuals on board, both individuals shall wear a life jacket at all times while afloat, except briefly while changing or adjusting clothing or personal equipment.

16.1.7 All boats are subject to inspection by the Technical Committee at any time.

16.2 Abandonment Due to Weather

16.2.1 Races for individual fleets may be abandoned or postponed when the 5-minute mean wind speed exceeds 24 knots or wind gusts exceed 30 knots, as determined by RC Principal Race Officer ('PRO'). If these conditions exist 90 minutes before the scheduled warning signal, signals may be made ashore. If these conditions develop less than 90 minutes prior to the scheduled warning signal start, signals may be made by RC Signal Boat.

16.2.2 Should the 5-minute mean wind speed exceed 20 knots but not 24 knots, RC PRO may change the course for some or all fleets to a mid-distance course, as determined by the PRO (with input from the OA at PRO's discretion).

17. Radio Communication

17.1 All official radio communications shall be made on VHF Channel 72.

17.2 Except in an emergency, a boat that is racing shall not make voice or data transmissions and shall not receive voice or data communication not available to all boats. This restriction also applies to mobile telephone, tablets, computers, and similar devices. [DP]

17.3 Boats are reminded of their obligation to maintain a radio watch on VHF Channel 16 to be compliant with USCG regulations.

17.4 A courtesy hail will be made each day at 0900 on VHF.

18. Prizes



- 18.1 Prizes will be given as follows for the regatta
 - 18.1.1 Buoy, Sport Boat, Small Boat, MD, and JAM Fleets 1st, 2nd and 3rd places for each class comprising more than five boats.
 - 18.1.2 Multihull fleet 1st place for a class comprising more than three boats.
- 18.2 WYC/AIS Memorial Cup will be presented to the winner of the all classes pursuit race. Keeper 1st, 2nd, 3rd, 4th, and 5th place trophies may also be awarded.
- 18.3 Prizes for 1st, 2nd and 3rd places for each class comprising five or more boats for each race, for each day may also be awarded.
- 18.4 Additional prizes may be awarded at the discretion of the OA.

19. DISCLAIMER OF LIABILITY, WAIVER, AND RELEASE OF LIABILITY

- 19.1 Sailing is an activity that has an inherent risk of damage and injury, including without limitation bodily injury, personal injury, permanent disability, and death. Each person (including without limitation owner, skipper, crew, spectators, officials, and others) participates in each race, social event, and/or associated activity(ies) entirely at his/her **own risk**. See RRS 4, “Decision to Race”.
- 19.2 ORGANIZING AUTHORITY, RACE COMMITTEE, PROTEST COMMITTEE, SPONSORS, HOST CLUB AND VENUE (AND EACH OF THEIR RESPECTIVE OFFICERS, DIRECTORS, EMPLOYEES, CONTRACTORS, OFFICIALS, MEMBERS, GUESTS, VOLUNTEERS, REPRESENTATIVES AND ALL OTHER PERSONS IN THEIR CAPACITY OF ASSISTING A RACE, SOCIAL EVENT AND/OR ASSOCIATED ACTIVITIES) (COLLECTIVELY, “**RACE ORGANIZERS**”) WILL NOT BE RESPONSIBLE OR LIABLE FOR ANY ACTION, CLAIM OR SUIT (COLLECTIVELY, “**CLAIMS**”) OR LIABILITY, LOSS, DAMAGE, ACCIDENT OR INJURY WHATSOEVER (INCLUDING BODILY INJURY, PERSONAL INJURY, PERMANENT DISABILITY OR DEATH) (COLLECTIVELY, “**DAMAGES**”) TO ANY PERSON, PROPERTY OR BOAT WHETHER CAUSED BY, ARISING OR RESULTING FROM THEIR ACT, ERROR, OMISSION OR ALLEGED NEGLIGENCE OR MISCONDUCT, WEATHER OR SEA CONDITIONS, HAZARDS OF ANY KIND, DEFECTS OR FAILURE OF BOATS TO BE SEAWORTHY IN HULL, RIGGING OR GEAR, OR ANY ACTS, ERRORS OR OMISSIONS OR ALLEGED NEGLIGENCE OR MISCONDUCT OF **RACE ORGANIZERS** OR OTHER PARTICIPANTS OR BOATS WHICH MAY OCCUR PRIOR TO, DURING OR ARISING OUT OF OR IN CONNECTION WITH ANY RACE, REGATTA, EVENT, CRUISE, SPECTACLE, SOCIAL EVENT, RACE FACILITIES OR ANY ACTIVITY SCHEDULED, SPONSORED OR AIDED IN WHOLE OR IN PART BY ANY **RACE ORGANIZER(S)**, TO THE FULLEST EXTENT PERMITTED BY LAW.
- 19.3 BY PARTICIPATING, EACH PARTICIPANT (AND IN THE CASE OF CHILDREN AND MINORS, EACH PARTICIPANT’S PARENT OR GUARDIAN) FOREVER WAIVES, DISCHARGES AND RELEASES ANY AND ALL **CLAIMS** WHATSOEVER AGAINST **RACE ORGANIZERS** FOR ANY **DAMAGES** TO ANY PERSON, PROPERTY OR BOAT (I) SUSTAINED IN CONJUNCTION WITH OR PRIOR TO, DURING, OR AFTER EACH RACE, SOCIAL EVENT



AND ASSOCIATED ACTIVITIES; OR (II) ARISING, RELATING OR RESULTING FROM USE OF RACE FACILITIES OR PARTICIPATION IN ANY RACE, SOCIAL EVENT OR ASSOCIATED ACTIVITIES, TO THE FULLEST EXTENT PERMITTED BY LAW.

19.4 PARTICIPANT RELEASES ALL **RACE ORGANIZERS** FROM ANY **CLAIM** ON ACCOUNT OF GIVING ASSISTANCE, AID, CARE, ADVICE, RESCUE, FIRST AID, TREATMENT OR SERVICES.

19.5 OWNERS AND SKIPPERS OF ALL PARTICIPATING BOATS ARE REQUIRED TO INFORM ALL CREWMEMBERS OF THIS **DISCLAIMER OF LIABILITY AND RELEASE** AS A CONDITION OF ENTRY.

20. Insurance

20.1 All boats must maintain Liability Insurance in full force and effect during *racing* which will include a General Liability policy written by a reputable insurance company insuring the owner and any operators against liability for bodily injury in limits of not less than \$300,000 and for property damage of not less than \$100,000. Each boat will present proof of insurance upon OA's request.

21. Publicity and Photographer's Rights

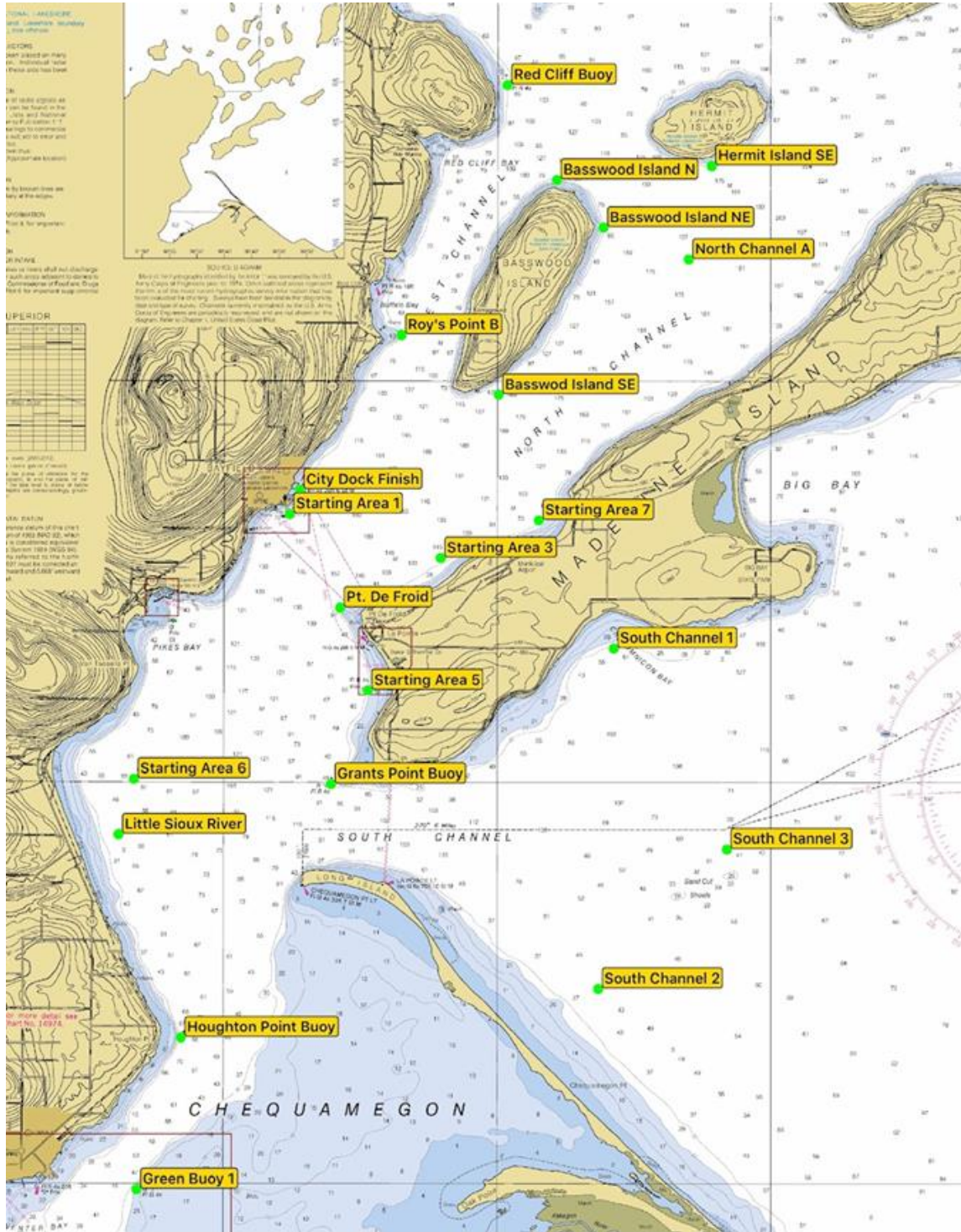
21.1 As a condition of participation, each participant (on behalf of him/herself and their children and minors) grants Race Organizers (and their designated photographers, videographers, and marketing, communications and public relations personnel) the perpetual, irrevocable right, license and permission to use, publish and distribute the participant's name, photos, video, images and statements of them and their boat and crew in all forms and media worldwide (including without limitation Internet) for any purposes whatsoever (including without limitation press releases, advertising, promotions, sales of pictures, etc.) without compensation, notification or further permission.

22. Organizing Authority.

22.1 Organizing Authority (OA) and Host Club is the Apostle Islands Station of the Wayzata Yacht Club.



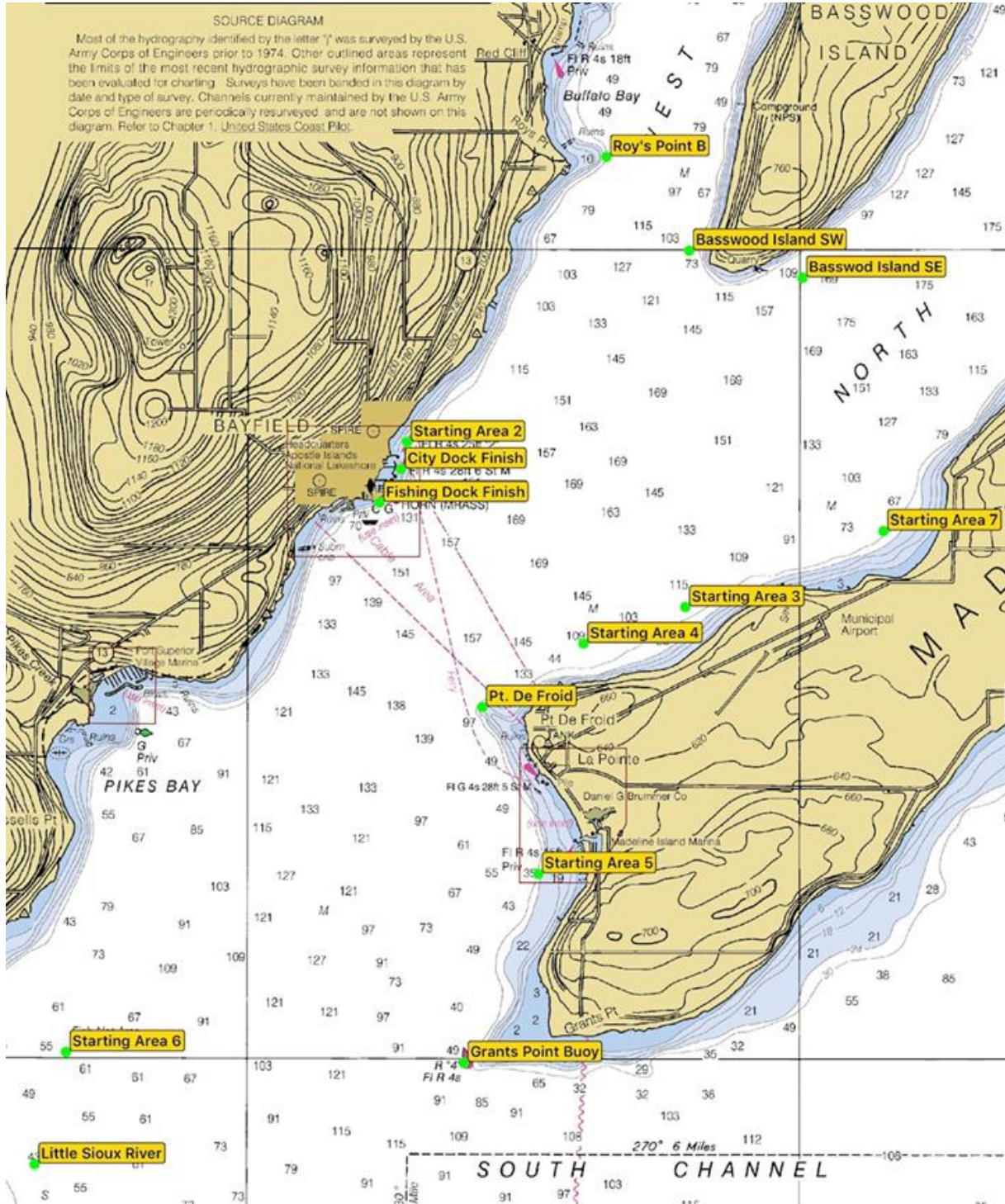
Appendix A – Racing Area



Note: All Mark locations are approximate.



Appendix A – Racing Area



Note: All Mark locations are approximate.



Appendix A - Waypoint Coordinates

Starting Areas		DMS		DMM	
Waypoint	Description	Latitude	Longitude	Latitude	Longitude
SA1	Starting Area 1 off USCG Station	46°48'19.8"N	90°48'46.7"W	46°48.330'N	90°48.778'W
SA2	Starting Area 2 - N of Bayfield Ferry Dock	46°48'47.9"N	90°48'32.1"W	46°48.798'N	90°48.535'W
SA3	Starting Area 3 off Madeline Island Airport	46°47'46.9"N	90°46'00.9"W	46°47.782'N	90°46.014'W
SA4	Starting Area 4 off Pt. De Froid	46°47'33.3"N	90°46'56.2"W	46°47.555'N	90°46.936'W
SA5	Starting Area 5 off of La Pointe	46°46'08.0"N	90°47'20.7"W	46°46.133'N	90°47.344'W
SA6	Starting Area 6 - South of Pikes Bay	46°45'01.7"N	90°51'37.1"W	46°45.029'N	90°51.618'W
SA7	Starting Area 7 - Sunset Bay	46°48'15.1"N	90°44'13.1"W	46°48.251'N	90°44.218'W
Finish Areas		DMS		DMM	
Waypoint	Description	Latitude	Longitude	Latitude	Longitude
CDF	City Dock Finish	46°48'37.9"N	90°48'35.4"W	46°48.632'N	90°48.590'W
FDF	Fishing Dock Finish	46°48'25.5"N	90°48'47.1"W	46°48.425'N	90°48.786'W
Fixed Government Marks		DMS		DMM	
Waypoint	Description	Latitude	Longitude	Latitude	Longitude
GP	Grants Point Buoy	46°44'58.0"N	90°48'01.0"W	46°44.967'N	90°48.017'W
GB1	Green Buoy 1 - South of Houghton Point	46°39'54.9"N	90°51'33.5"W	46°39.915'N	90°51.558'W
HPB	Houghton Point Buoy	46°41'48.4"N	90°50'45.2"W	46°41.807'N	90°50.754'W
RCB	Red Cliff Bouy	46°53'40.5"N	90°44'47.5"W	46°53.675'N	90°44.791'W
Drop Marks		DMS		DMM	
Waypoint	Description	Latitude	Longitude	Latitude	Longitude
BSE	Basswood Island SE	46°49'49.0"N	90°44'57.3"W	46°49.816'N	90°44.954'W
BS	Basswood Island South Tip	46°49'47.0"N	90°45'41.0"W	46°49.784'N	90°45.683'W
BSW	Basswood Island SW	46°49'59.0"N	90°45'58.8"W	46°49.983'N	90°45.980'W
BNNW	Basswood Island NNW	46°52'22.2"N	90°44'20.7"W	46°52.370'N	90°44.344'W
BN	Basswood Island N	46°52'29.6"N	90°43'53.1"W	46°52.494'N	90°43.886'W
BNNE	Basswood Island NNE	46°52'20.4"N	90°43'18.1"W	46°52.340'N	90°43.301'W
BNE	Basswood Island NE	46°51'53.9"N	90°43'02.0"W	46°51.898'N	90°43.033'W
HSE	Hermit Island SE	46°52'40.0"N	90°41'03.2"W	46°52.666'N	90°41.054'W
LSR	Little Sioux River	46°44'20.1"N	90°51'54.0"W	46°44.335'N	90°51.900'W
NCA	North Channel A	46°51'30.0"N	90°41'28.4"W	46°51.500'N	90°41.474'W
PDF	Point De Froid	46°47'09.8"N	90°47'51.2"W	46°47.163'N	90°47.853'W
RPB	Roy's Point B	46°50'33.7"N	90°46'43.9"W	46°50.562'N	90°46.732'W
SC1	South Channel 1 - Chebomnicon Bay	46°46'39.3"N	90°42'50.9"W	46°46.656'N	90°42.848'W
SC2	South Channel 2 - N of Chequamegon Pt.	46°42'24.9"N	90°43'08.0"W	46°42.415'N	90°43.133'W
SC3	South Channel 3 - 5 nm east of Grants Pt.	46°44'09.1"N	90°40'46.9"W	46°44.152'N	90°40.782'W

Note: All Mark locations are approximate.



Appendix B – Buoy Course Descriptions

<p>Course Examples:</p> <ul style="list-style-type: none"> • W/L 2 = S-W-F • W/L 4 = S-W-L-W-F • W/L 6 = S-W-L-W-L-W-F • W/L 2 O = S-W-O-F (with Offset) • W/L 4 G = S-W-G-W-F (with Gate) • W/L 4 O G = S-W-O-G-W-O-F (with Offset & Gate) 	<p>Course Examples:</p> <ul style="list-style-type: none"> • W/L 6 G = S-W-L-W-L-W-F (with Gate) • W/L 6 O = S-W-L-W-L-W-F (with Offset) • W/L 6 O G = S-W-L-W-L-W-F (with Offset & Gate) 	

Note: Course diagrams and examples do not illustrate all potential course configurations. Any Buoy Course may be changed to finish at the Bayfield Fishing Dock